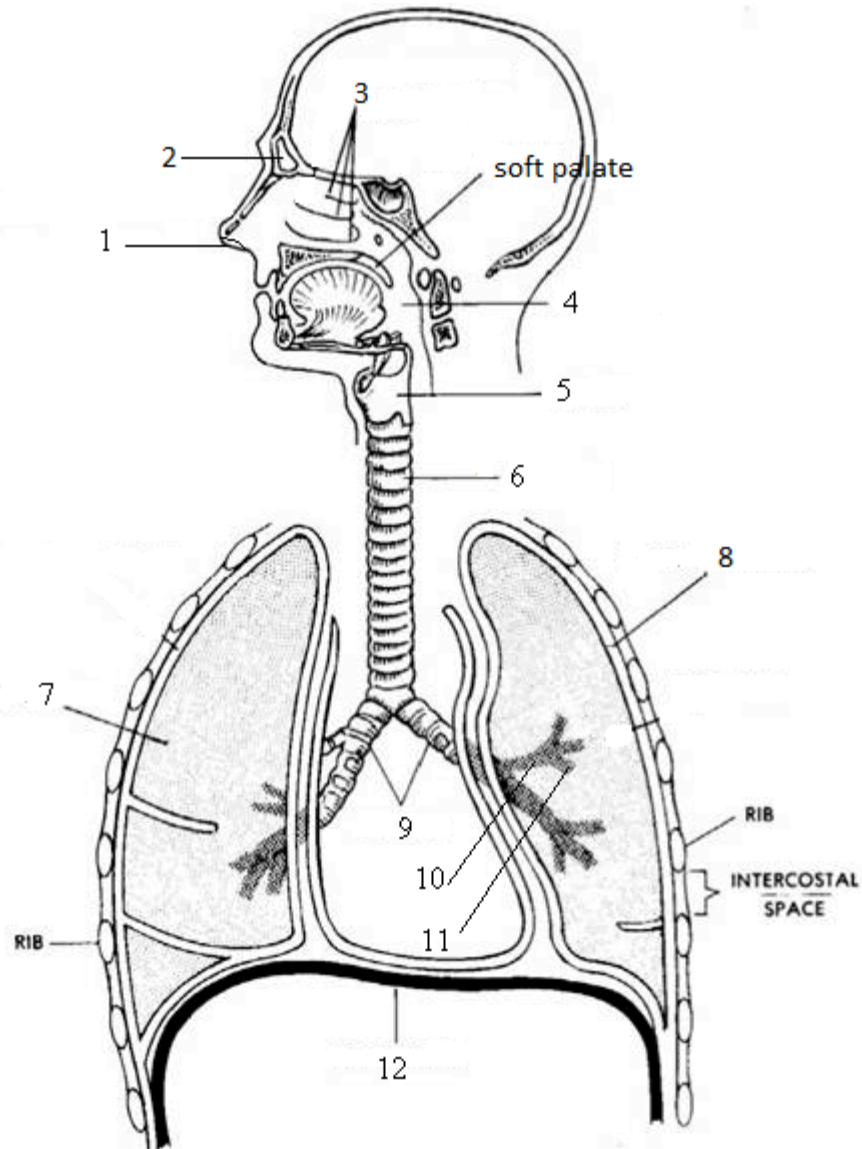


Name \_\_\_\_\_

Date Due \_\_\_\_\_

Learning Target: Label the structures of the respiratory system and state the function of each structure. (knowledge)

Label the diagram using the following words: primary bronchus, secondary bronchus, tertiary bronchus, diaphragm, larynx, lung, nasal conchae, nostril, pharynx, pleural cavity, trachea, and sinus.



- \_\_\_\_\_ 13. Which organ is not found in the upper respiratory tract?
- a. nose
  - b. pharynx
  - c. larynx
  - d. sinuses

- \_\_\_\_\_ 14. Which organ is not found in the lower respiratory tract?
- a. trachea
  - b. bronchial tree
  - c. lungs
  - d. nasal cavity

Use the word bank to complete the story of how air passes through the respiratory system:  
alveoli, nostrils, trachea, pharynx, larynx, nasal conchae

15. Air enters the respiratory system through the \_\_\_\_\_.
16. The \_\_\_\_\_ are covered in a mucous membrane that heats and moistens the air.
17. The \_\_\_\_\_ connects the nasal cavity with the larynx.
18. The epiglottis stands upright when a person is not swallowing, allowing air to enter the \_\_\_\_\_.
19. Within the wall of the \_\_\_\_\_ are cartilaginous rings that prevent the blockage of the airway.
20. The bronchial tree consists of branched airways that connect the trachea with the \_\_\_\_\_.