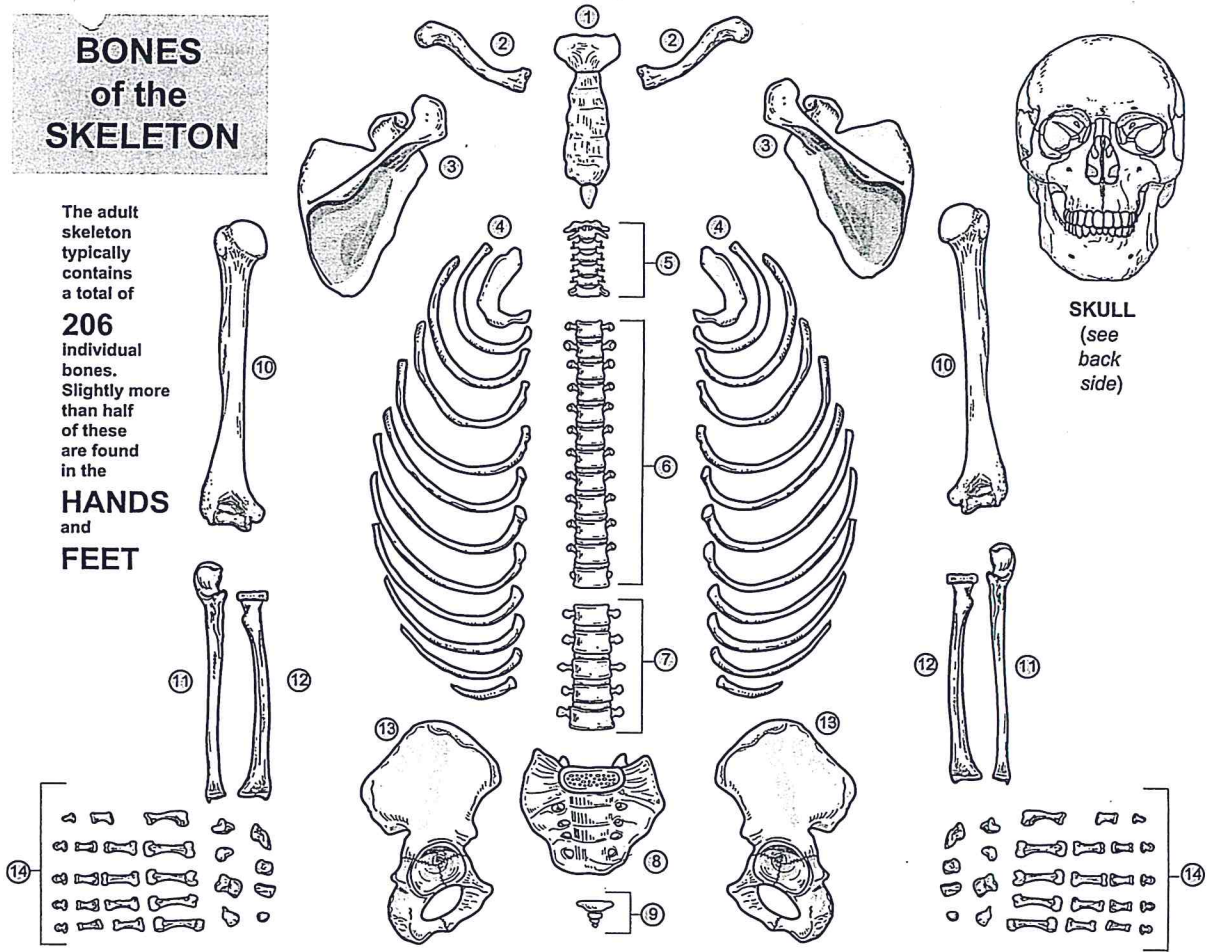


# Bones to Know

## BONES of the SKELETON

The adult skeleton typically contains a total of **206** individual bones. Slightly more than half of these are found in the **HANDS** and **FEET**

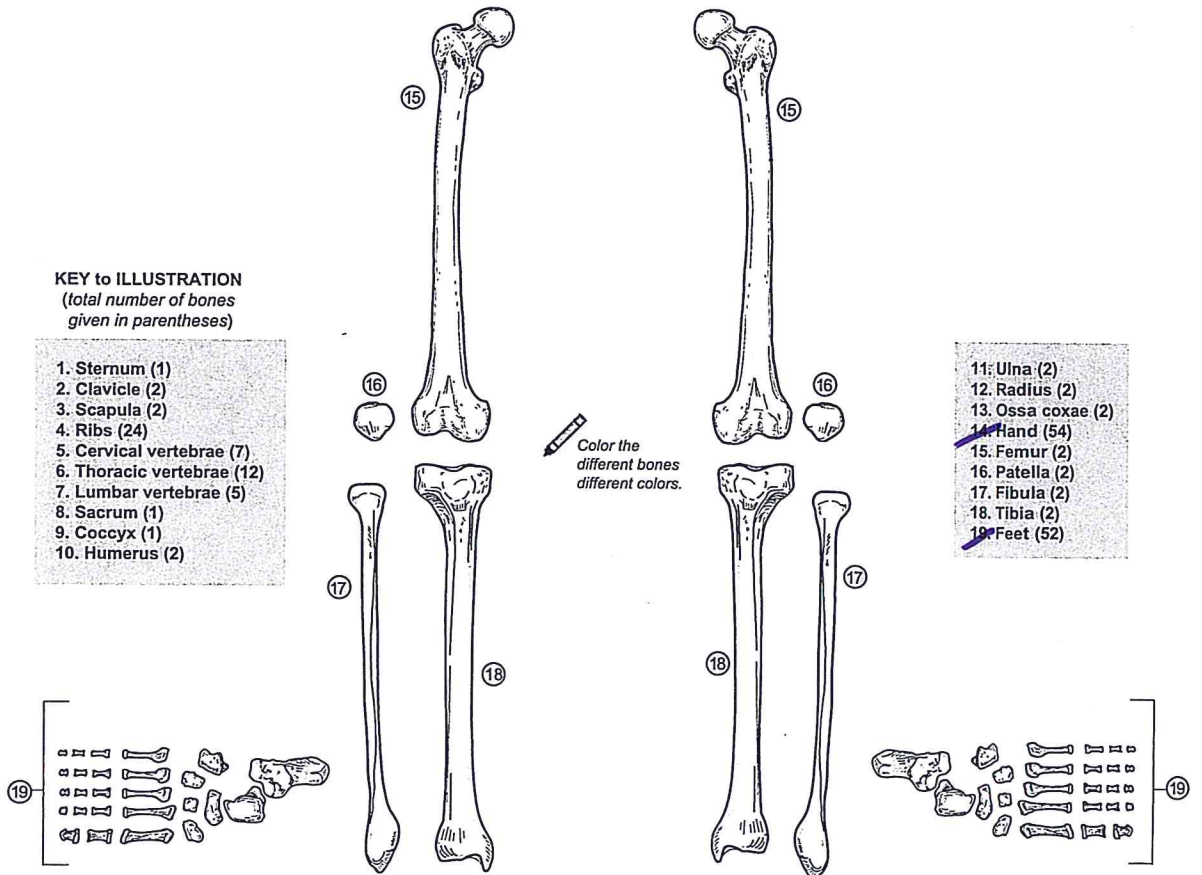


**KEY to ILLUSTRATION**  
(total number of bones given in parentheses)

- 1. Sternum (1)
- 2. Clavicle (2)
- 3. Scapula (2)
- 4. Ribs (24)
- 5. Cervical vertebrae (7)
- 6. Thoracic vertebrae (12)
- 7. Lumbar vertebrae (5)
- 8. Sacrum (1)
- 9. Coccyx (1)
- 10. Humerus (2)

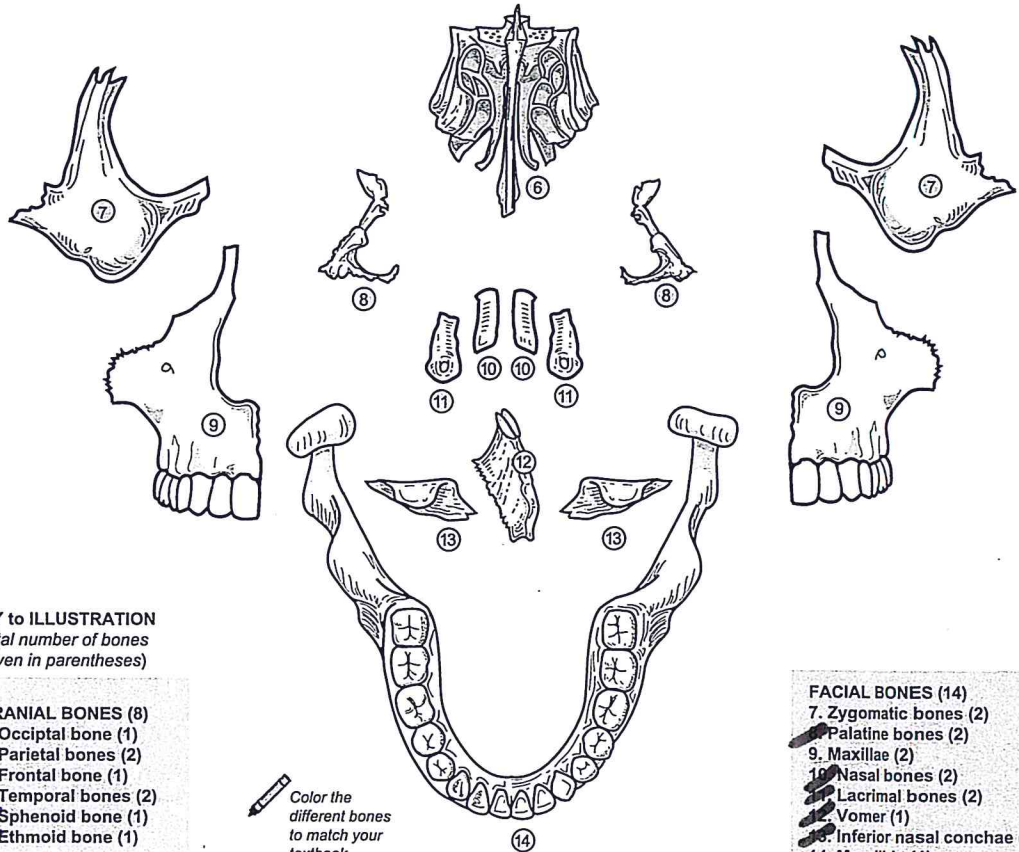
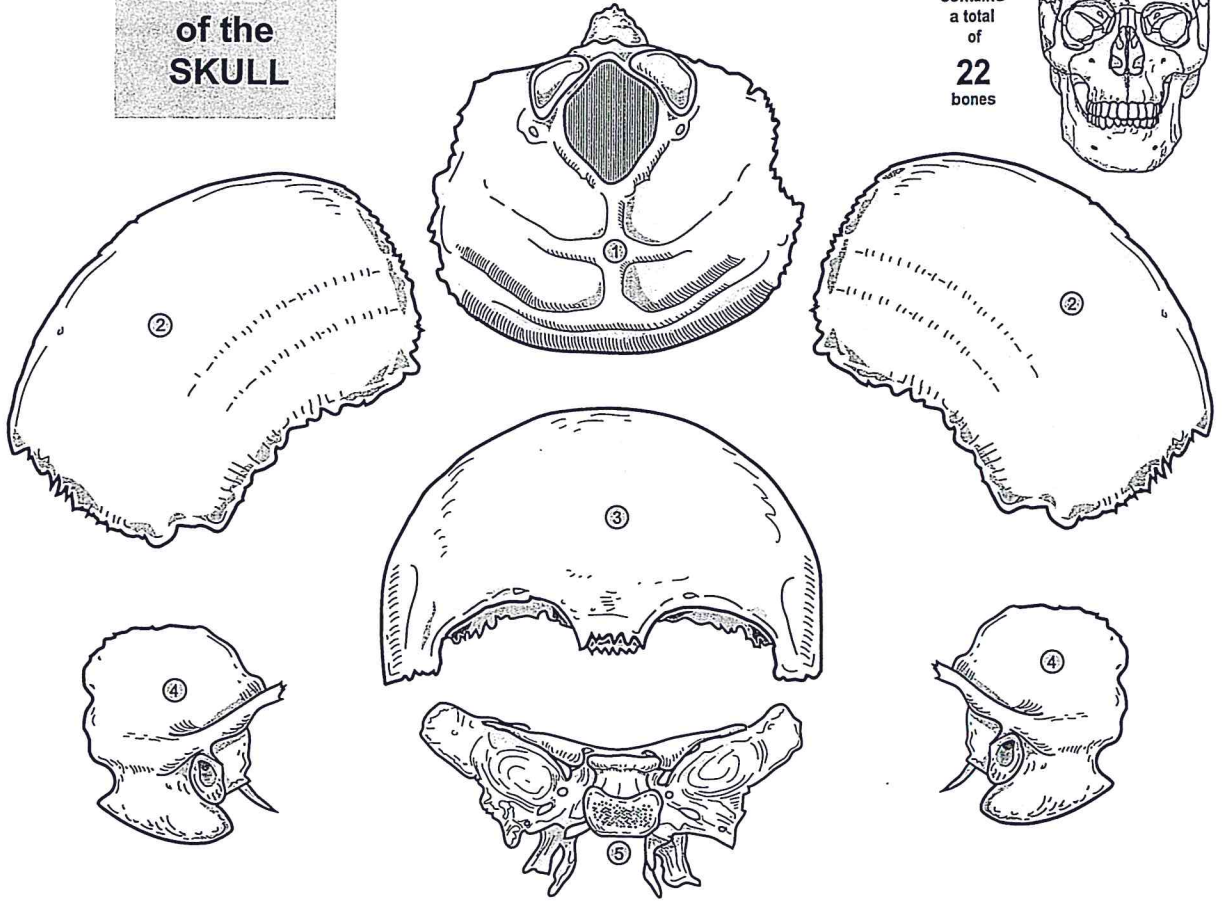
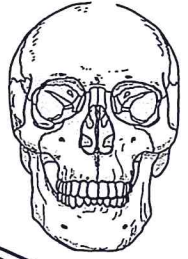
- 11. Ulna (2)
- 12. Radius (2)
- 13. Ossa coxae (2)
- 14. Hand (54)
- 15. Femur (2)
- 16. Patella (2)
- 17. Fibula (2)
- 18. Tibia (2)
- 19. Feet (52)

Color the different bones different colors.




# BONES of the SKULL

The skull contains a total of **22** bones



**KEY to ILLUSTRATION**  
(total number of bones given in parentheses)

- CRANIAL BONES (8)**
- 1. Occipital bone (1)
  - 2. Parietal bones (2)
  - 3. Frontal bone (1)
  - 4. Temporal bones (2)
  - 5. Sphenoid bone (1)
  - 6. Ethmoid bone (1)

 Color the different bones to match your textbook.

- FACIAL BONES (14)**
- 7. Zygomatic bones (2)
  - 8. Palatine bones (2)
  - 9. Maxillae (2)
  - 10. Nasal bones (2)
  - 11. Lacrimal bones (2)
  - 12. Vomer (1)
  - 13. Inferior nasal conchae (2)
  - 14. Mandible (1)