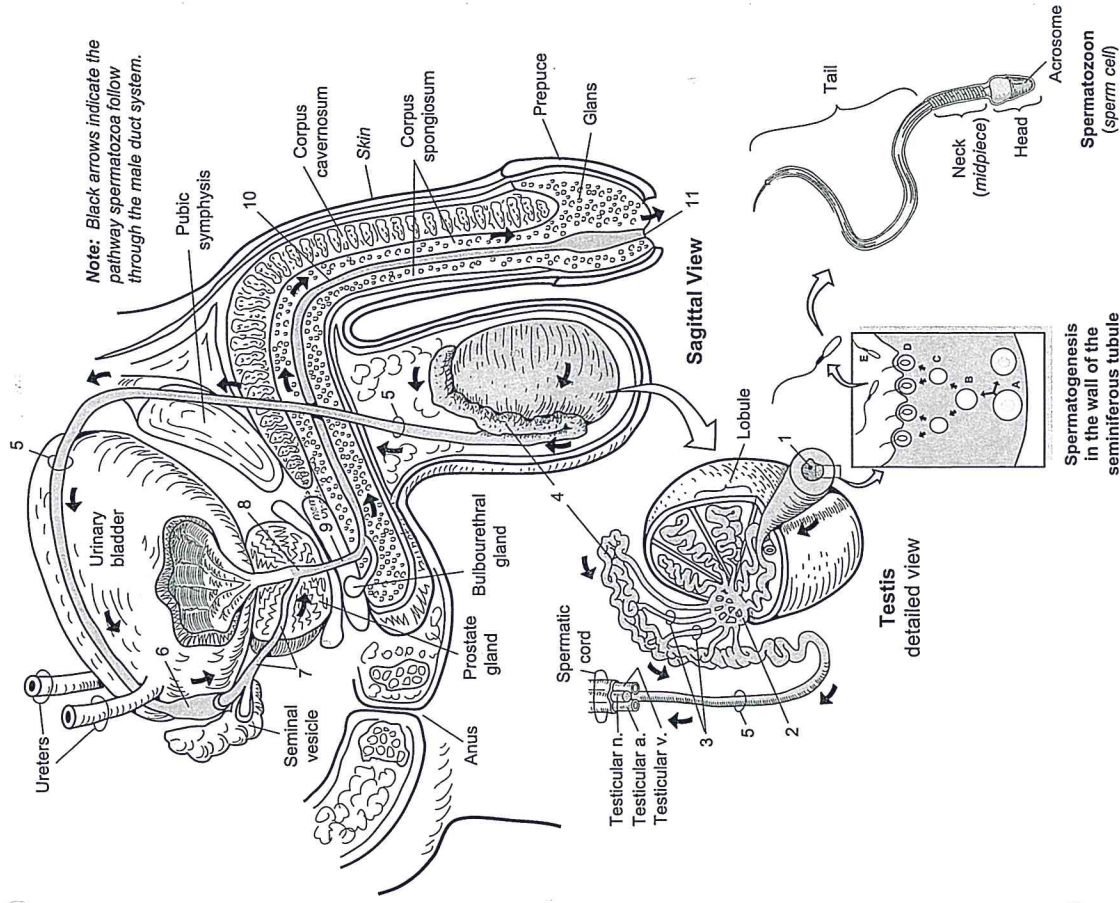


Use this mnemonic for the simplified pathway shown above:  
 "Some Really Elderly Elephants Don't Even Urinate!"

**Key to Illustration**

- A. Spermatogonium
- B. Primary spermatocyte
- C. Secondary spermatocyte
- D. Spermatid
- E. Spermatozoon (sperm cell)



## FEMALE REPRODUCTIVE SYSTEM

Midsagittal View

### Description

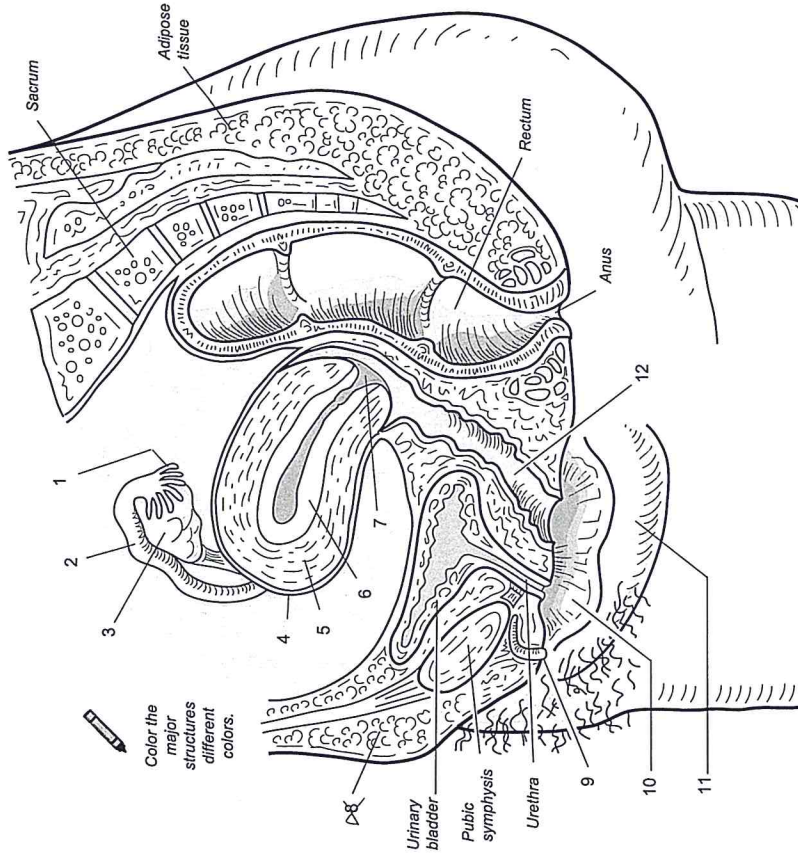
The midsagittal view of the female reproductive system allows you to see its relationship to other organs/structures in the body. For example, notice that the uterus is superior to the urinary bladder and anterior to the rectum. Moreover, it allows you to see structures in their full length like the clitoris and the vagina. It also helps illustrate how structures connect one structure to another such as the vagina connecting the uterus to outside the body.

A description of each of the structures numbered in the illustration is given in the table below.

Structure	Description
1. Fimbriae of the uterine tube	The finger-like extensions of the uterine tube nearest the ovary
2. Uterine tube (fallopian tube, oviduct)	The hollow, muscular tubes that connect the ovaries to the uterus; the site of fertilization
3. Ovary	The female gonad that produces an ovum or egg cell; two ovaries are suspended in the pelvic cavity, one on each side of the uterus
4. Perimetrium	The serous membrane that extends from the peritoneal lining that covers most of the outside of the uterus
5. Myometrium	The thick, muscular layer that forms the wall of the uterus
6. Endometrium	The innermost, glandular layer of the uterus; site where the developing embryo implants
7. Cervix	A neck-like structure at the inferior portion of the uterus that projects into the vagina
8. Mons pubis	A relatively large mound of skin and fatty tissue located anterior to the pubic symphysis; covered with pubic hair in adult females.
9. Clitoris	A small, erectile body that engorges with blood during sexual excitation.
10. Labia minora ("smaller lips")	Smaller, hairless folds located inside the larger labia majora that may have increased pigmentation due to the abundance of melanocytes; homologous to the ventral shaft of the penis.
11. Labia majora ("larger lips")	Thick, protruding folds of fatty skin that are homologous to the male scrotum. Outer margins are covered with coarse pubic hair in the adult female.
12. Vagina	A thick muscular tube that connects the uterus to outside the body; acts as the organ to receive the penis during sexual intercourse and also functions as the birth canal and the passageway for menstruation.

## FEMALE REPRODUCTIVE SYSTEM

Midsagittal View



Female Reproductive System  
midsagittal view

1. \_\_\_\_\_
2. \_\_\_\_\_
3. \_\_\_\_\_
4. \_\_\_\_\_
5. \_\_\_\_\_
6. \_\_\_\_\_

7. \_\_\_\_\_
8. \_\_\_\_\_
9. \_\_\_\_\_
10. \_\_\_\_\_
11. \_\_\_\_\_
12. \_\_\_\_\_