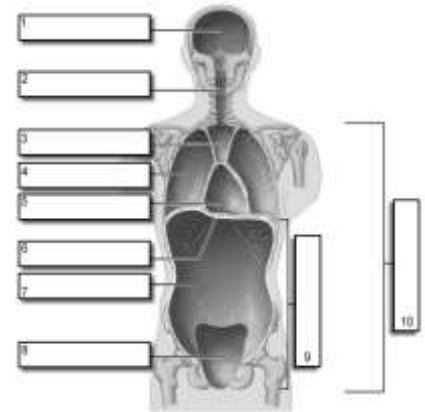


INTRODUCTION TO HUMAN ANATOMY

BIG IDEAS

1. Levels of Organization
2. Body Cavities
3. Organ Systems
4. Relative Positions
5. Body Sections

Know all terms and ideas related to each of these "Big Ideas"



TERMS

- | | |
|---|--|
| <ol style="list-style-type: none"> 1. Metabolism 2. Homeostasis 3. Absorption 4. Anatomy 5. Physiology | <ol style="list-style-type: none"> 6. Tissues 7. Organelle 8. Diaphragm 9. Assimilation 10. Secretion |
|---|--|

Not all terms are listed from the chapters – some you will relearn when you study the "big ideas". For example, proximal & distal are part of the "relative positions" big idea.

LABELING

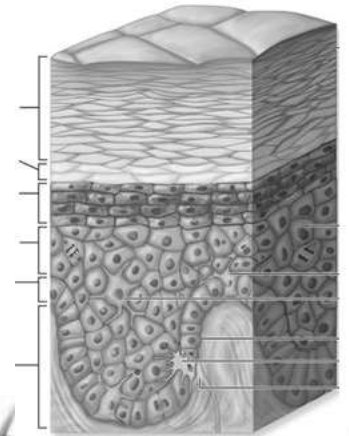
1. Body Sections
2. Body Cavities

All notes, diagrams and worksheets can be found at bradylong.weebly.com. You have labeling sheets already labeled that you will see on the final.

INTEGUMENTARY SYSTEM

BIG IDEAS

1. Function of integumentary system
2. Parts of the bone (diaphysis, epiphysis..)
3. Difference between dermis and epidermis
4. Types of cells in the integumentary system and where they are found.
5. Why those cells types are found in that region of the skin.
6. Where is avascular and where is vascular
7. Regions of the dermis
8. How a tattoo stays



TERMS

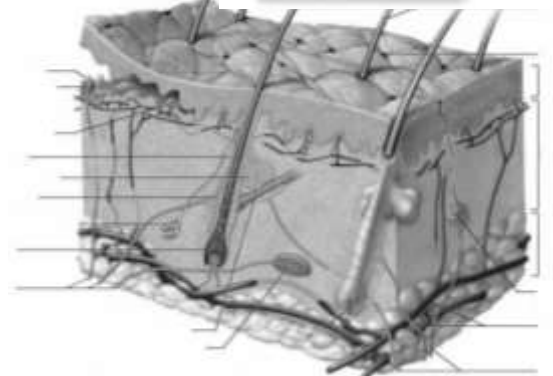
1. Keratin Cells
2. Merkel Cells
3. Melanocytes
4. Phalanges
5. Periosteum
6. Dermal papillae

LABELING

1. Layers of the epidermis
2. Structure of Skin
3. Cells found in dermis

LAB

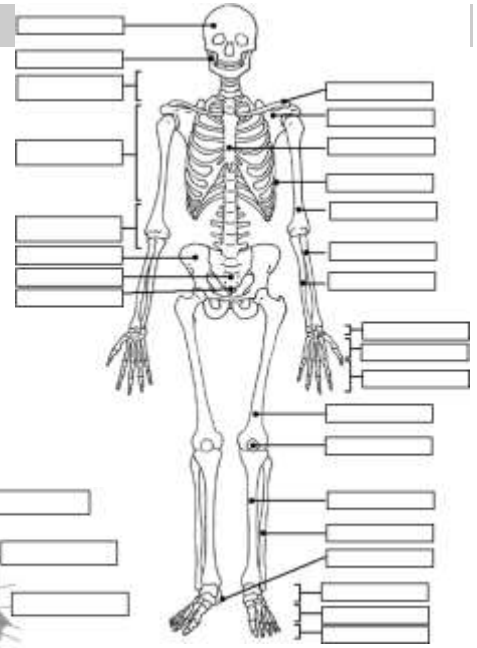
1. Histology (be able to distinguish, identify parts, and speak to structure and function): Simple squamous, adipose, areolar, dense irregular connective tissue
2. Layers of the epidermis



SKELETAL SYSTEM

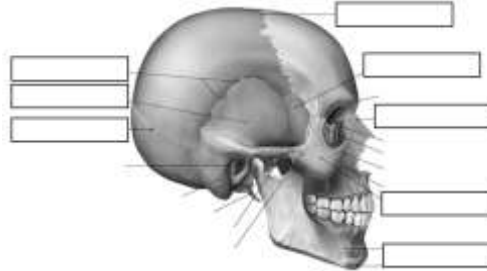
BIG IDEAS

1. What are the functions of the skeletal system?
2. Parts of the bone (diaphysis, epiphysis..)
3. Types of Bones
4. Skeletal Organization
5. Skull (all bones)
6. Vertebral column (lumbar, thoracic..)
7. Thoracic cage
8. Pectoral Girdle & Upper limbs
9. Pelvic Girdle & Lower limbs
10. Types of joints



TERMS

- | | |
|------------------------|---------------|
| 1. Articular cartilage | 5. Periosteum |
| 2. Long bone | 6. Hyoid bone |
| 3. Patella Bone | 7. Ligament |
| 4. Phalanges | |



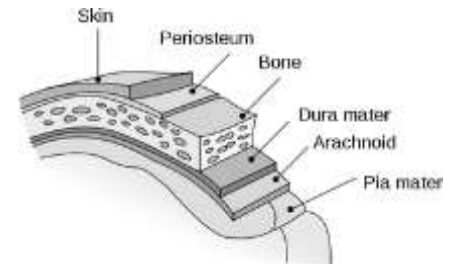
LAB

1. Histology (be able to distinguish, identify parts, and speak to structure and function): osseous tissue, fibrocartilage, hyaline cartilage, dense regular connective tissue
2. Bones of the body (image, physical bone, x-ray)
3. Bones of the skull (image, physical bone, x-ray)

NERVOUS SYSTEM

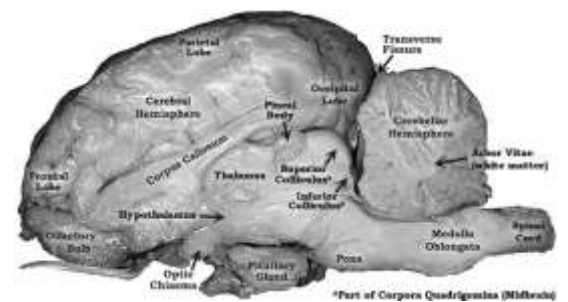
BIG IDEAS

- | | |
|------------------------------|--------------------------|
| 1. Organization | 7. Lobes of the brain |
| 2. Neurons | 8. Brain Stem |
| 3. Nerve | 9. Action potential |
| 4. Transition of information | 10. Part of Sheep Brain |
| 5. Grey v White Matter | 11. Structure of the Eye |
| 6. Brain structure | |



TERMS

- | | |
|--------------------|----------------------|
| 1. Autonomic | 9. Nodes of Ranvier |
| 2. Somatic | 10. Cell Body/Soma |
| 3. CNS | 11. Myelin |
| 4. PNS | 12. Neurotransmitter |
| 5. Parasympathetic | 13. Photoreceptor |
| 6. Sympathetic | 14. Rod |
| 7. Axon | 15. Cone |
| 8. Dendrite | |



LAB

1. Histology (be able to distinguish, identify parts, and speak to structure and function): Neuron
2. Sheep Brain identification
3. Cow Eye identification

REPRODUCTIVE SYSTEM

BIG IDEAS

1. Male Anatomy
2. Female Anatomy
3. Intersex
4. Reproduction
5. Contraception
6. Diseases of reproductive system
7. Semen production
8. Zygote development
9. Gamete development
10. Hormones

