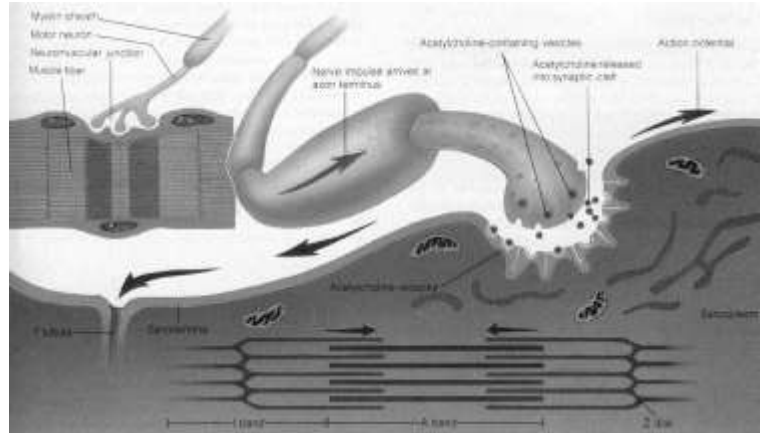


MUSCULAR SYSTEM

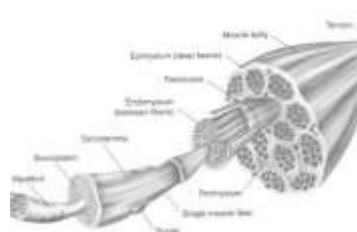
BIG IDEAS

1. 3 types of muscles
2. Muscle hierarchy
3. Parts of a sarcomere
4. Neuromuscular Junction
5. Muscle Fatigue and Rigor Mortis



TERMS

1. Epimysium
2. Perimysium
3. Endomysium
4. Actin
5. Myosin
6. Acetylcholine
7. Cholinesterase
8. Cross Bridge

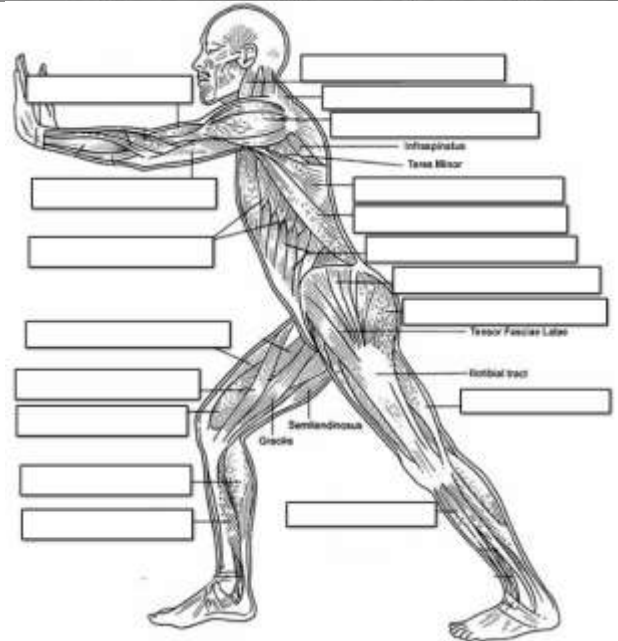


MICROSCOPE

1. Skeletal Muscle
2. Dense Regular Connective Tissue

LAB

1. Head and Neck: Orbicularis Oculi, Orbicularis Oris
2. Shoulders and Chest: Trapezius, Deltoid, Latissimus Dorsi, Pectoralis Major
3. Abdomen: External Oblique, Internal Oblique, Transversus Abdominis
4. Arms: Brachioradialis, Biceps Brachii, Triceps Brachii
5. Thighs and Hips: Sartorius, Biceps Femoris, Gastrocnemius, Gluteus Maximus, Gluteus Medius



ENDOCRINE SYSTEM

BIG IDEAS

1. Master Gland
2. Hypothalamus
3. Negative Feedback
4. Thyroid Gland
5. Acromegaly
6. Hypothyroidism
7. Parathyroid Gland
8. Adrenal Gland
9. Pancreas
10. Diabetes

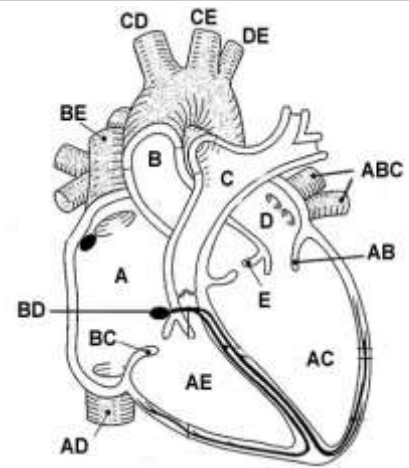
HORMONES

1. Growth Hormone (GH)
2. Thyroid-stimulating Hormone (TSH)
3. Oxytocin
4. Antidiuretic Hormone (ADH)
5. Thyroxin (T4)
6. Parathyroid Hormone (PTH)
7. Epinephrine
8. Insulin
9. Glucagon

CIRCULATORY SYSTEM (includes BLOOD)

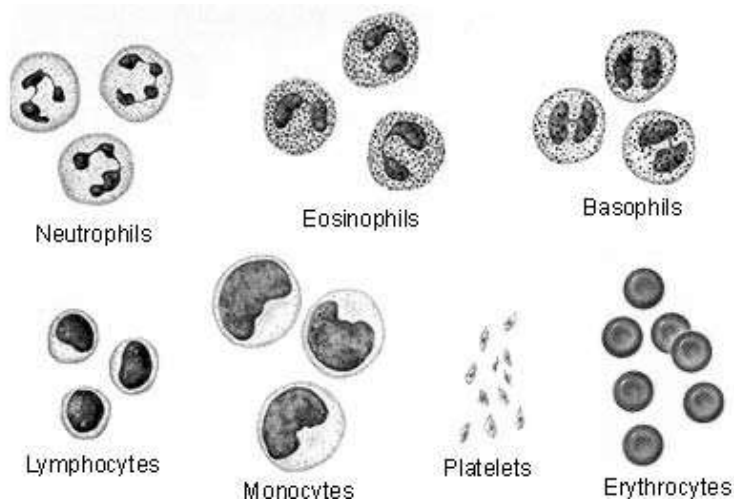
BIG IDEAS

1. Composition
2. Red Blood Cells (Erythrocytes)
3. White Blood Cells – Neutrophils, Eosinophils, Basophils, Lymphocytes, Monocytes
4. Blood Types
5. Punnett Squares
6. Hemophilia
7. Sickle Cell Anemia
8. Coagulation
9. 3 Types of Valves
10. Flow of Blood
11. Pulmonary v. Systemic
12. Artery v Vein
13. Cardiac Cycle



TERMS

1. Hemoglobin
2. Platelets
3. Rh Factor
4. Plasma
5. Antibodies
6. Systole
7. Diastole

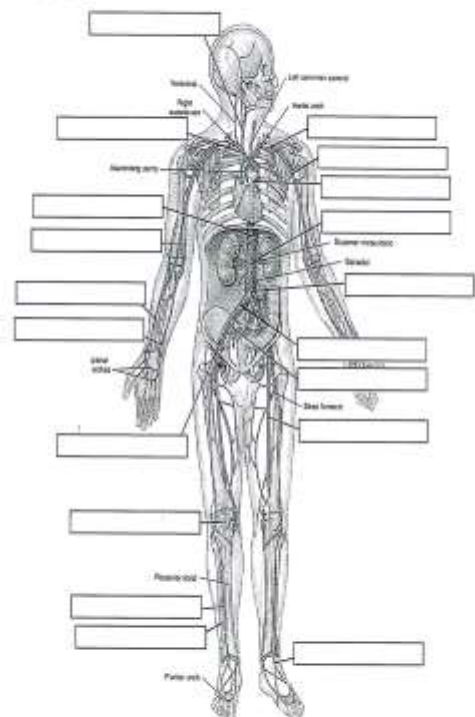


MICROSCOPE

- | | | |
|-----------------|----------------|-------------------|
| 1. Erythrocytes | 4. Basophils | 7. Cardiac Muscle |
| 2. Eosinophils | 5. Lymphocytes | |
| 3. Neutrophils | 6. Monocytes | |

LAB

1. Heart: Apex, Right/Left Atrium, Right/Left Ventricle, Semilunar Valves, Mitral Valve, Tricuspid
2. Arteries:
 - a. Head: Brachiocephalic Trunk, Subclavian, Common Carotid
 - b. Abdomen: Aorta, Celiac Trunk, Renal
 - c. Arm: Axillary, Brachial, Radial, Ulnar
 - d. Leg: External Iliac, Femoral, Posterior Tibial
3. Veins:
 - a. Head: Superior Vena Cava, Brachiocephalic, Subclavian, External Jugular
 - b. Abdomen: Inferior Vena Cava, Pulmonary, Hepatic, Renal
 - c. Arm: Axillary, Brachial, Radial, Ulnar
 - d. Leg: External Iliac, Femoral, Popliteal, Posterior Tibial



LYMPHATIC SYSTEM

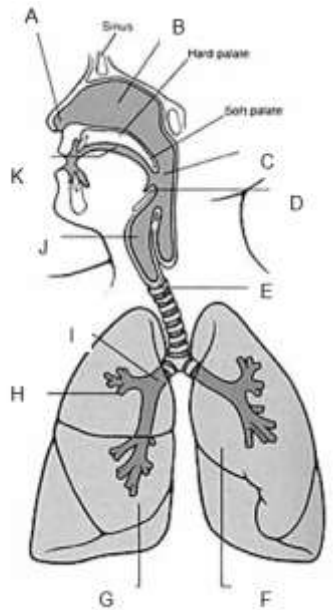
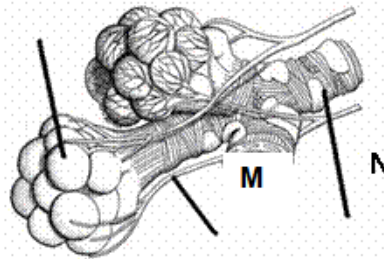
BIG IDEAS

1. Cell Mediated Response v. Humoral Response
2. 1st v. 2nd line of defense
3. Active v. passive immunity
4. Infectious v. non-infectious diseases
5. Mediated response v. humoral response

RESPIRATORY SYSTEM

BIG IDEAS

6. Mucus Membrane
7. Gas Exchange – External v. Internal Respiration
8. Gas Transport
9. Control of Breath Rate
10. Surfactant
11. Breath Cycle



MICROSCOPE

1. Simple Squamous Epithelial
2. Pseudostratified Ciliated Columnar Epithelial
3. Hyaline Cartilage

LABELING

- | | | |
|-----------------|----------------|--------------|
| 1. Nasal Cavity | 4. Trachea | 7. Diaphragm |
| 2. Pharynx | 5. L/R Bronchi | 8. Esophagus |
| 3. Larynx | 6. L/R Lung | 9. Alveoli |

DIGESTIVE SYSTEM

BIG IDEAS

1. Alimentary Canal
2. Steps of Digestion: Protein, Carbohydrates, Fats
3. Microvilli

TERMS

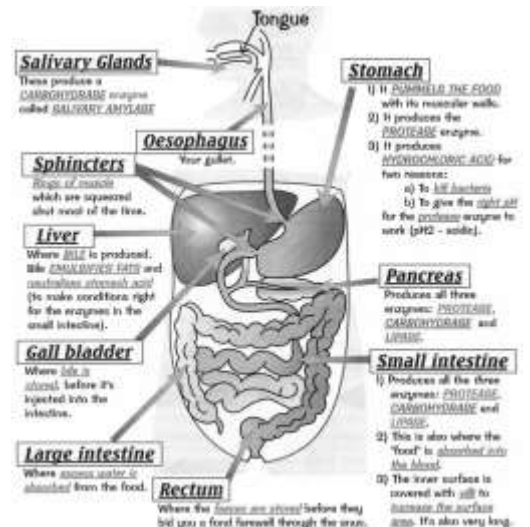
1. Peristalsis
2. Mastication

MICROSCOPE

1. Smooth Muscle
2. Simple Columnar Ep.
3. Elastic Cartilage

LABELING

- | | | |
|---------------------|---------------------|------------------|
| 1. Stomach | 7. Transverse | 13. Ileum |
| 2. Liver | 8. Descending | 14. Duodenum |
| 3. Esophagus | 9. Ascending | 15. Pancreas |
| 4. Pharynx | 10. Rectum | 16. Gall bladder |
| 5. Common Bile Duct | 11. Small Intestine | 17. Rectum |
| 6. Large Intestine | 12. Jejunum | |



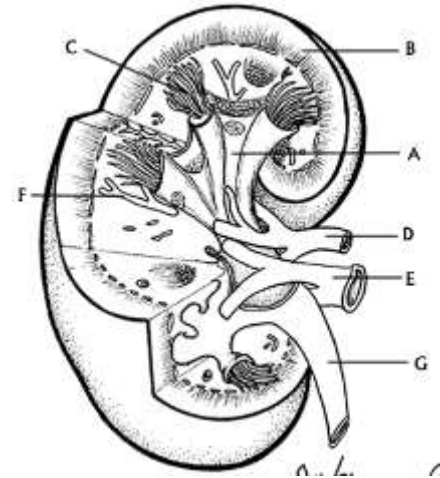
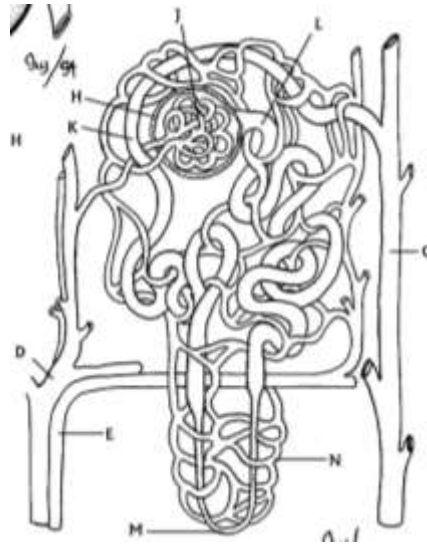
URINARY SYSTEM

BIG IDEAS

1. Function of
2. Specialized Capillary Beds
3. Tubular Reabsorption
4. Urine Composition
5. Urine Analysis

LABEL

1. Kidney
2. Ureter
3. Urinary Bladder
4. Urethra
5. Bowman's Capsule
6. Proximal Convolved Tubule
7. Loop of Henle
8. Distal Convolved Tubule



MICROSCOPE

1. Transitional Epithelial
2. Simple Cuboidal Epithelium
3. Loose Reticular Connective Tissue

LAB

- | | |
|------------------|-----------|
| 1. Cortex | 5. Column |
| 2. Medulla | 6. Pelvis |
| 3. Renal Pyramid | 7. Ureter |
| 4. Papilla | |

RABBIT DISECTION IDENTIFICATION

Respiratory/Circulatory System

- | | |
|-------------|---------------------|
| 1. Trachea | 4. Heart |
| 2. R/L Lung | 5. Pulmonary Artery |
| 3. Larynx | |

Digestive System

- | | |
|-----------------|--------------------|
| 1. Stomach | 4. Colon |
| 2. Liver | 5. Small Intestine |
| 3. Gall Bladder | 6. Esophagus |

Urinary

1. Urinary Bladder
2. Ureter
3. Kidney

