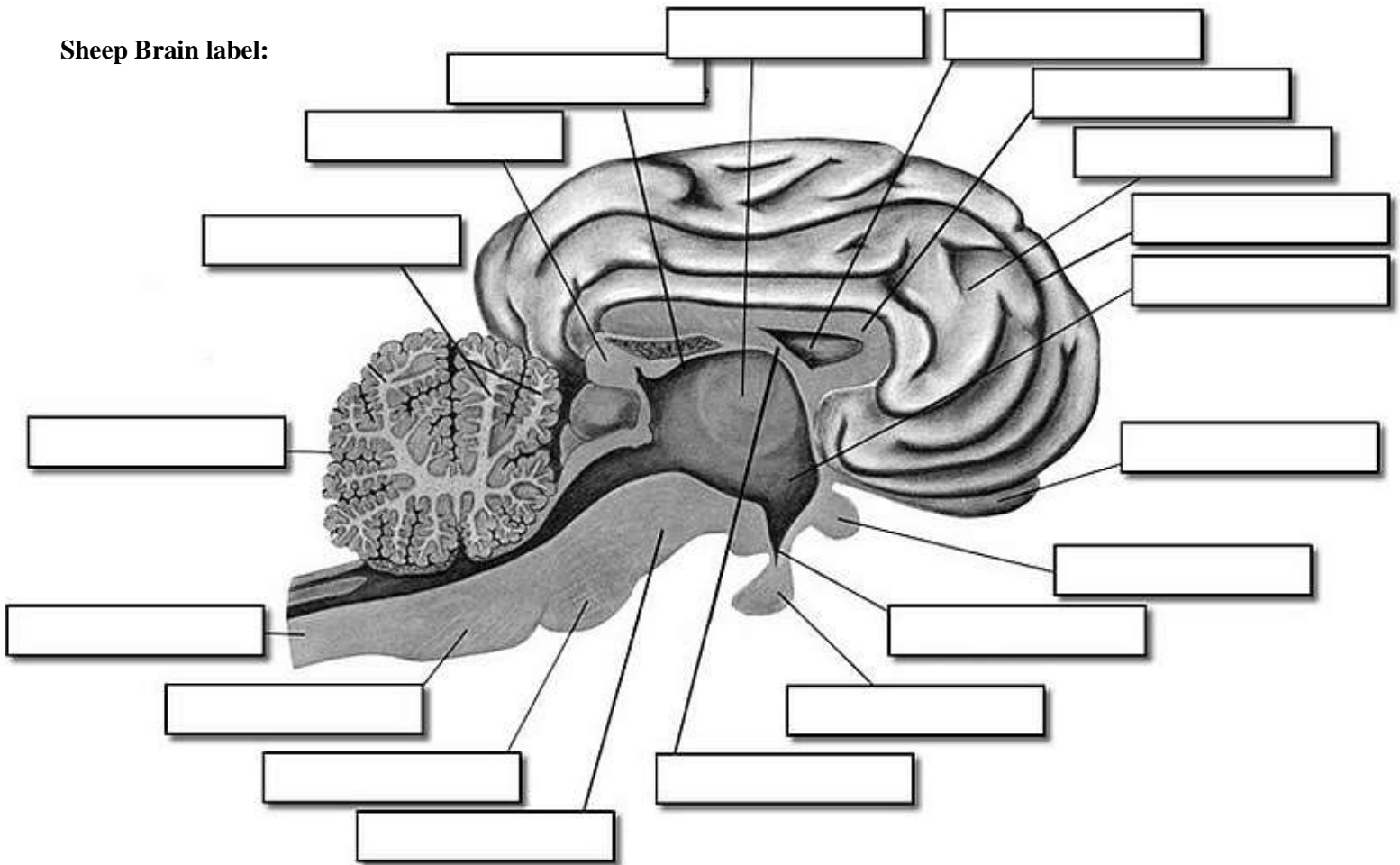


# Sheep Brain Dissection Analysis:

## Match the structure to the description

- |                           |   |
|---------------------------|---|
| ___ 1. Arbor Vitae        | a) looks like a butt  |
| ___ 2. Lateral Ventricle  | b) leathery covering over the entire brain                    |
| ___ 3. Optic Chiasma      | c) cauliflower, the area toward the back of the brain         |
| ___ 4. Superior Colliculi | d) behind the colliculi, looks like a little nub              |
| ___ 5. Dura Mater         | e) looks like a "tree"  |
| ___ 6. Cerebellum         | f) the rounded part of the brain stem                         |
| ___ 7. Pineal Gland       | g) shaped like an X   |
| ___ 8. Thalamus           | h) large area under the corpus callosum                       |
| ___ 9. Pons               | i) space for fluid between the corpus callosum and the fornix |
| ___ 10. Olfactory Bulb    | j) contains nerves, connects to the far front of the brain    |

## Sheep Brain label:

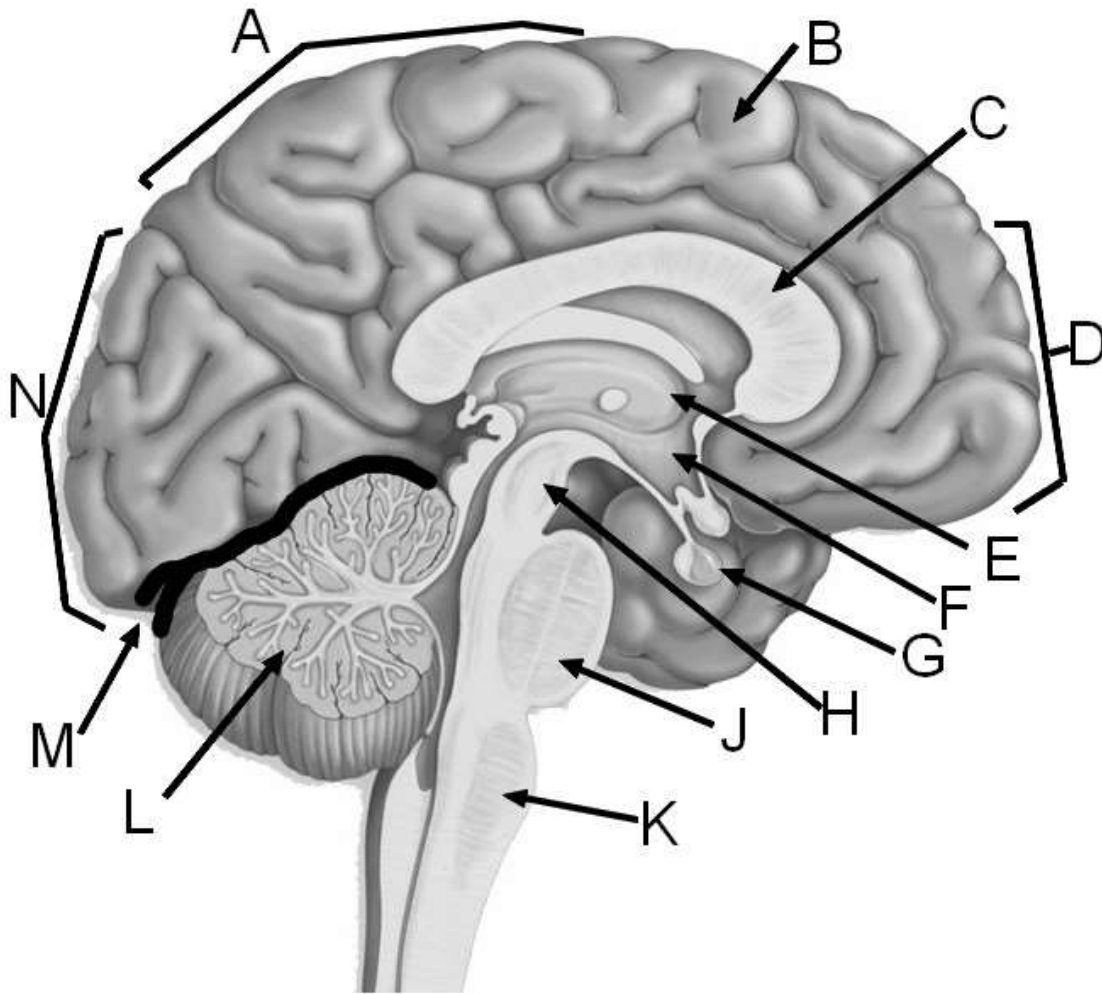


### Word Bank:

- |                   |                                  |                  |                   |
|-------------------|----------------------------------|------------------|-------------------|
| • Arbor Vitae     | • Hypothalamus                   | • Midbrain       | • Pituitary Gland |
| • Cerebellum      | • Infundibulum (Pituitary Stalk) | • Olfactory Bulb | • Spinal Cord     |
| • Corpus Callosum | • Lateral Ventricle              | • Optic Chiasma  | • Sulcus          |
| • Fornix          | • Medulla Oblongata              | • Pineal Body    | • Thalamus        |
| • Gyri            |                                  | • Pons           | • Third Ventricle |

# Human Brain

Label each of the brain regions and list its function:



**Word Bank:** Occipital Lobe, Cerebellum, Pons, Parietal Lobe, Corpus Callosum, Transverse Fissure, Medulla Oblongata, Thalamus, Pituitary Gland, Gyrus of the Cerebrum, Frontal Lobe, Hypothalamus, Midbrain