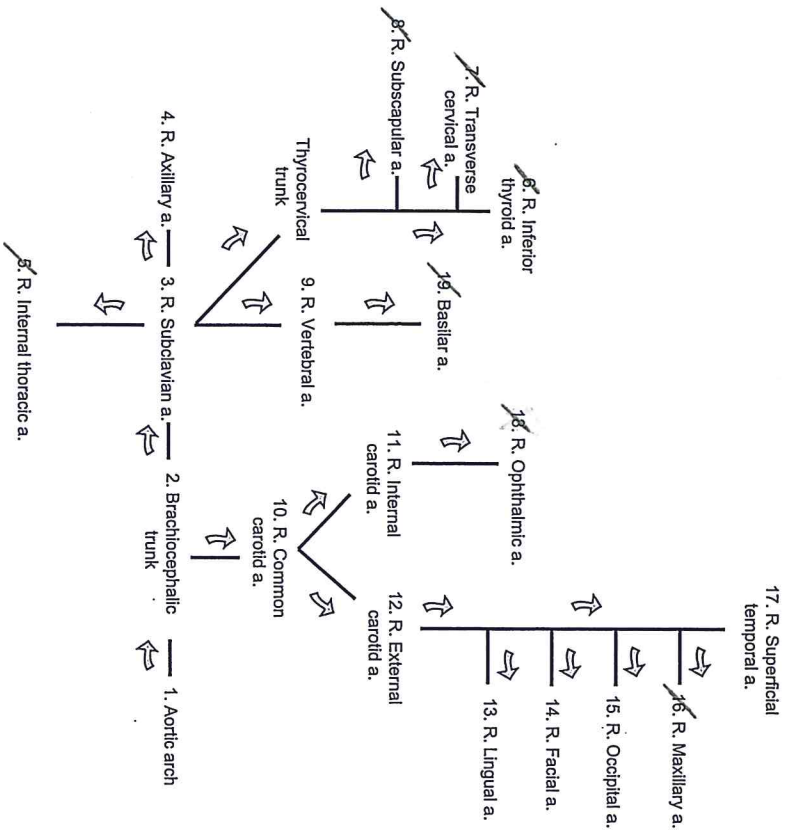
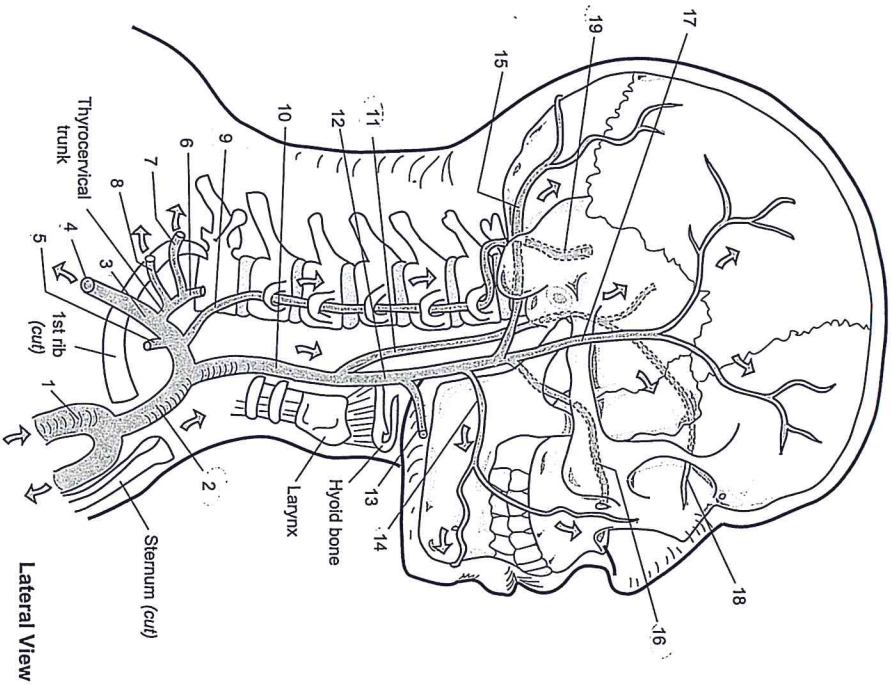


Don't need to know crossed off ones.

Key to Illustration



Note: Colored arrows indicate direction of blood flow.



- | | |
|-----------|-----------|
| 1. _____ | 11. _____ |
| 2. _____ | 12. _____ |
| 3. _____ | 13. _____ |
| 4. _____ | 14. _____ |
| 5. _____ | 15. _____ |
| 6. _____ | 16. _____ |
| 7. _____ | 17. _____ |
| 8. _____ | 18. _____ |
| 9. _____ | 19. _____ |
| 10. _____ | |

CARDIOVASCULAR SYSTEM—Blood Vessels—Arteries

Major Branches of the Abdominal Aorta

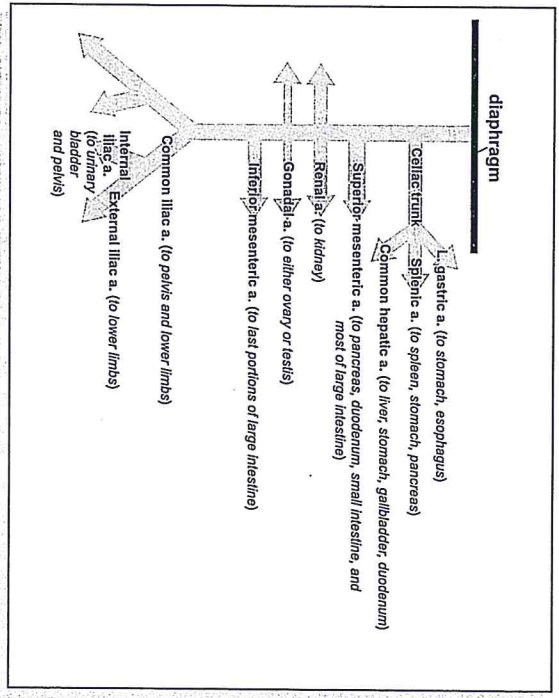
Description

The blood vessel branches of the abdominal aorta supply oxygenated blood to the organs and structures within the abdominal cavity and the lower limbs.

Study Tips

- o Use diaphragm as a landmark
- o Celiac trunk is first branch below the diaphragm
- o Superior mesenteric is larger in diameter than the inferior mesenteric
- o Renal and gonadal are paired
- o Gonadal arteries are slender

Schematic of major branches



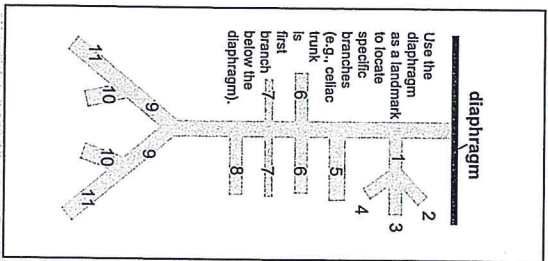
Key to Illustration

1. Celiac trunk	9. Common iliac a.
2. Common hepatic a.	10. Internal iliac a.
3. Left gastric a.	11. External iliac a.
4. Spleenic a.	
5. Superior mesenteric a.	
6. Renal a.	
7. Gonadal a.	
8. Inferior mesenteric a.	

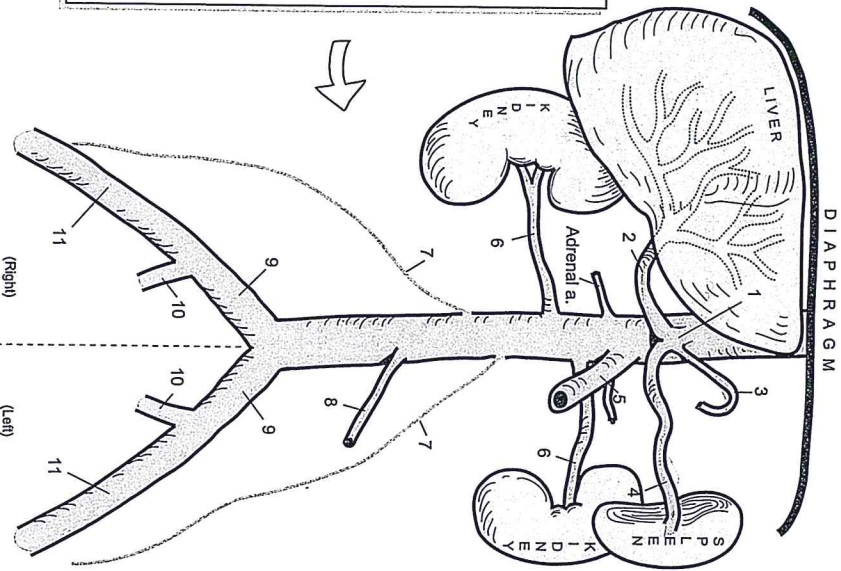
CARDIOVASCULAR SYSTEM—Blood Vessels—Arteries

Major Branches of the Abdominal Aorta

Schematic of major branches



- Use the diaphragm as a landmark to locate specific branches (e.g., celiac trunk is first branch below the diaphragm).
1. _____
 2. _____
 3. _____
 4. _____
 5. _____
 6. _____



- Anterior view**
7. _____
 8. _____
 9. _____
 10. _____
 11. _____