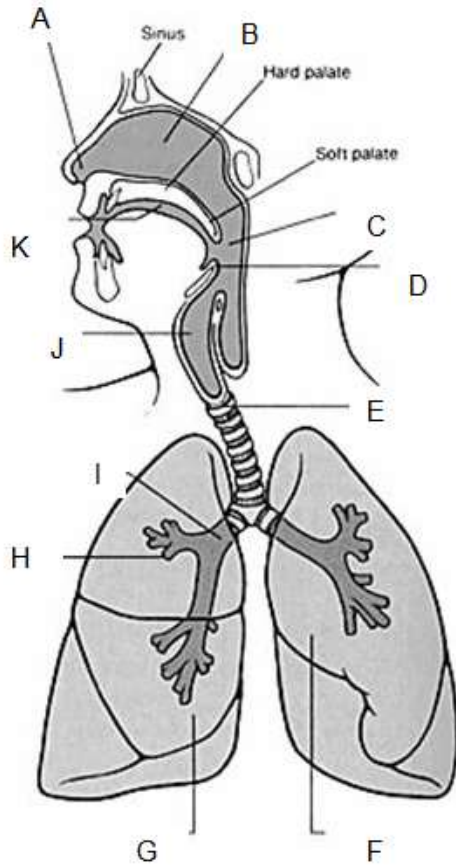


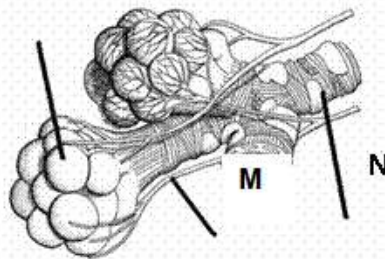
Respiratory System Parts



Name the parts of the respiratory system:

- A: _____
- B: _____
- C: _____
- D: _____
- E: _____
- F: _____
- G: _____
- H: _____
- I: _____
- J: _____
- K: _____
- L: _____
- M: _____
- N: _____

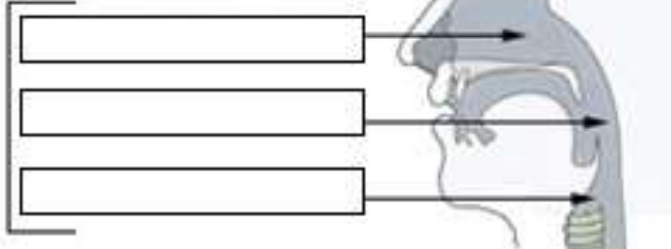
L



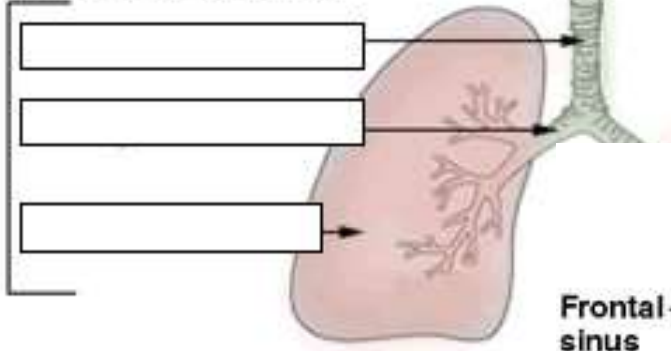
Path of Air: Fill in the blanks

Inspired air rich in _____ enters the body through the _____ or _____. As it passes through the _____ the air is warmed and moistened. It then passes the epiglottis and glottis and moves over the _____ also known as the voice box. Air now moves in the _____ also known as the windpipes. The air then passes into one of two _____ that branch into each lung. These structures then branch into bronchioles which have tiny air sacs at the end called _____. The alveoli are wrapped in blood vessels called _____. These vessels carry blood that is rich in _____ and low in _____. After inhalation, the alveoli contain air rich in _____ and gas exchange between the blood and alveoli air occurs. The process by which gas moves across the membranes is called _____. _____ are a type of blood cell that carries the oxygen to body cells. In the body cells, oxygen is used in the mitochondria in a process called _____. The process creates _____ gas that is eventually returned to the alveoli and expelled during _____.

Upper respiratory tract



Lower respiratory tract



Copyright © The McGraw-Hill Companies, Inc. Permission required for reproduction or display.

